

DECI Rectangular

PRODUCTION SERIES
SURFACE FINISH

AUTOMATED. INTELLIGENT. COMPREHENSIVE.

The patent-pending DECI Rectangular automated surface finish vibratory system is exclusively engineered for additive manufactured parts. Designed to meet the specifications for your desired Roughness Average (Ra) to achieve various types of finishes, the DECI Rectangular is ideal for all 3D printed materials. No other post-print solution integrates software, hardware, and chemistry into a complete system that removes the post-print bottleneck to enable increased time to market.

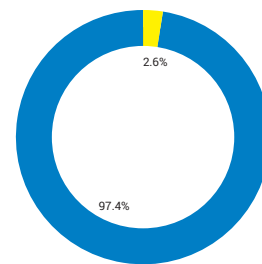
FOCUSED ON 3D PRINTING.

PostProcess is singularly dedicated to post-print technologies for the additive manufacturing market. The result is a forward-thinking design that increases the efficiency of your 3D printing operations. The DECI Rectangular's large working envelope can be divided to run both abrasive and polish operations simultaneously. Additionally, our proprietary and eco-friendly media and detergents are formulated specifically for additive materials.

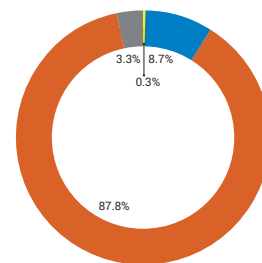
SOFTWARE DRIVEN.

Our *Automat3D* software, which controls our proprietary Agitation Algorithm™, provides real-time decision making for your desired surface finish while preserving the fine-feature detail of unique geometries. Precisely controlling all variables, including heat, frequency, amplitude, and lubricity, our solution ensures less breakage. In addition, you have the capability to "set it and forget it" with recipe programming that no other system can offer.

The PostProcess Solution: Labor and Cost Savings



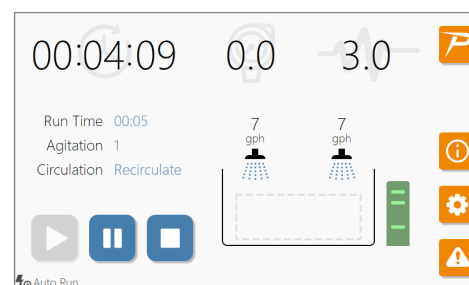
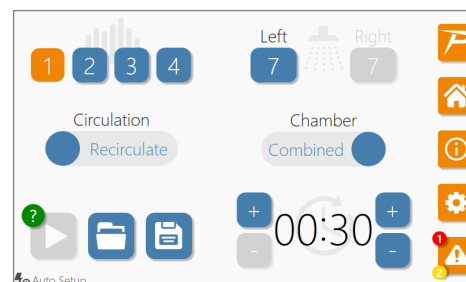
Manual
Post-printing
Labor Costs



PostProcess
Technologies
Cost Savings

■ Labor
■ Repairs
■ Consumables
■ Savings

PostProcess *Automat3D* Intelligent Software



HARDWARE FEATURES

- Thoughtful construction - contoured back walls, corrugated side walls, urethane coated envelope, textured powder coated enclosure
- Singular tub for large parts, or divider option for dual abrasive and polish operations
- Advanced industrial controls by Beckhoff™
- High durability, low maintenance design

RESULTING IN...

- + Superior surface finish
- + Evenly treated parts
- + Cycle time reduction

SOFTWARE FEATURES

- Real time decision making
- Intelligent cycle times
- Integrated diagnostics
- Variable detergent dosing
- Precise control of all variables
- Recipe programming

RESULTING IN...

- + Minimized part breakage
- + Minimal operator intervention
- + Preservation of fine-feature details

PRODUCT SPECIFICATIONS

SIZE AND WEIGHT

- Envelope: 60" W × 24" L × 24" H
- Overall width: 96 1/4"
- Volume of parts should not exceed 1/3rd of envelope
- Machine Footprint (open door):
 - 164 1/4" W X 72 1/4" D X 78 7/16"
- Approx. weight: 3220 lbs. empty; 4300 lbs. full

ELECTRICAL

- 3 phase, 208 V, 5-wire
- Amperage: 30A

MATERIALS AND TECHNOLOGIES

- All 3D print materials
- All 3D print technologies

CONSUMABLES

- Abrasive and polishing media
- PG3 Detergent
- PG4 Cleaning Agent

SAFETY FEATURES

- Multi-position, self-supporting hinged lid
- Emergency stop
- Auto power down
- Compliant with all OSHA regulations

